

Queen Creek Suburban Ranches Flood Irrigation Information



www.qcsri.com



QCSR Board

Water Master:
Peggy Reed
text 602-819-6854

President:
Austin Beckman
480-540-0819

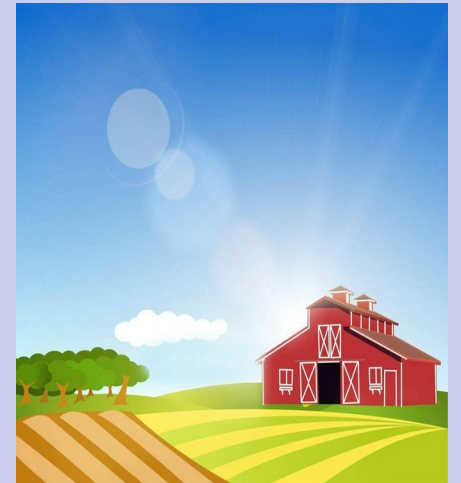
Vice President:
Stephen Kalandros
602-708-3581

Secretary/Treasurer:
Stacey Spangler
480-694-0604
billing@qcsri.com

Pump Master:
Ray Fuller
(contact through Water Master)

Board Members:
Sue Flores
Geno Acton

Queen Creek Suburban Ranches Flood Irrigation information



**Providing flood
irrigation for over
50 years**

www.qcsri.com

QCSR

Availability: Irrigation will start either Friday or Saturday and run until all orders have been fulfilled (usually Sunday, sometimes as late as Tuesday)

Cost: \$17/hour—Irrigation is provided in half-hour increments (minimum 1 hour)

Ordering: Write a check for the full amount and place it in the drop-box in front of Lot 54 (43011 N. Suburban Ave)

- In lieu of a check you may pay/order using cash in a sealed envelope
- Write your phone number and lot number on the check or envelope

Deadline: All water must be ordered/paid for by **Thursday at 4:30 PM** before the weekend you want to irrigate

Schedule: The water schedule is posted by **11 PM Thursday** on the board in front of Lot 54 (43011 N. Suburban Ave)

On the Web: The schedule is also posted by **6 AM Friday** at www.qcsri.com

Notes:

- Irrigation schedules are rotated by ditch
- To be able to irrigate, your balance must be under \$90 and your account must be in good standing
- The pump will be turned off if our rain gauge shows 3" in one hour

YOU are responsible for:

- Opening your ports and putting down your ditch check/gate at your appointed time to receive your irrigation water
- Opening enough ports during your appointed time to accept the water without overflowing the ditch
- Ensuring ditch grates are clear of debris back to the pump while irrigating
- *If you are the first lot to receive water on your ditch* : Ensuring that all gates from your ditch back to the pump are open and any other gates which may divert the water are closed
- Closing your ports and lifting your ditch check/gate by **Thursday at 12 noon** before the new irrigation cycle
- Keeping your ditch section clear of debris
- Keeping your ports and ditch check/gate in good working order
- Asking questions if you don't know what to do (see contact info on back)



Penalties

Penalties are assessed if:

- × Your ports are *open* or your ditch check/gate is *down* after 12 noon Thursday before irrigation starts **OR**
- × Your ports are *closed* or your ditch check/gate is *up* when scheduled to get water **OR**
- × You don't take all your scheduled water **OR**
- × You take/block someone else's water

1st Infraction: written warning

2nd Infraction: \$50 fine, water rights suspended for 2 pump runs

Further Infractions: \$100 fine, water rights suspended for 4 pump runs

For more info, visit: www.qcsri.com